

For Lease

32,027 SF CTU

2827 Santa Fe Avenue, Vernon, CA



GRUBB & ELLIS  
From Insight to Results

For more information, please contact:

**Bart Pucci**

213.596.2252

bart.pucci@grubb-ellis.com

CA License #01000409

Grubb & Ellis Company

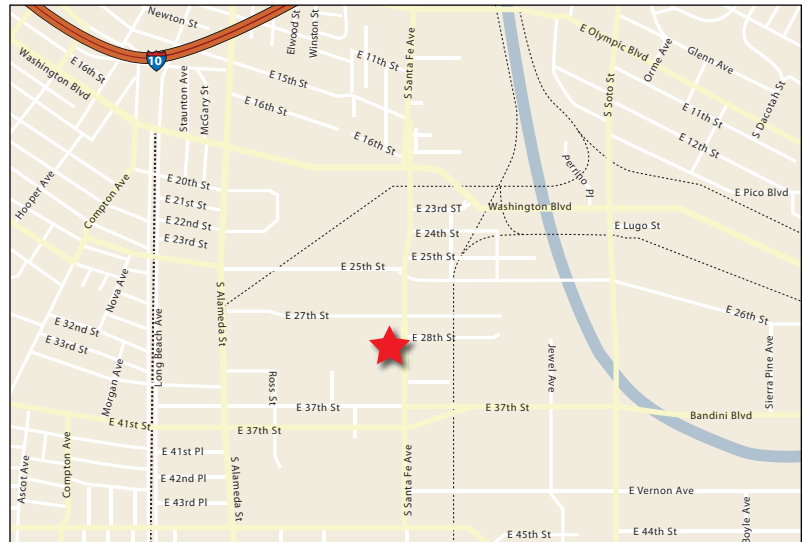
www.grubb-ellis.com

CA License #00812184



## 2827 Santa Fe Avenue, Vernon (32,027 SF)

Lease Rate:	\$0.58 Gross PSF
Total Building Area:	32,027 SF
Office:	Allowance
Total Land:	POL
Clear Height:	28'
Loading Doors:	5
DH Doors:	4
GL Doors:	1
Sprinkler System:	.45/3000 ESFR Ready
Skylights:	Yes, 2%



### PROPERTY HIGHLIGHTS

- Project has 72,206 SF of excess land for Tenant's extra parking needs
- 28' Ceiling Clearance
- 3,000 amp pull section; 200 amp house meter
- Concrete Truck Apron
- Secure Yard
- Close proximity to Downtown Los Angeles
- Dock High Loading

Developed, Managed and  
Marketed by:



**IDS**

REAL ESTATE GROUP

CA License #00964696

The information contained herein was obtained from third parties, and has not been independently verified by the real estate brokers. Buyers/tenants should have the experts of their choice inspect the property and verify all information. Real estate brokers are not qualified to act as or select experts with respect to legal, tax, environmental, building construction, soils, drainage, or other such matters.

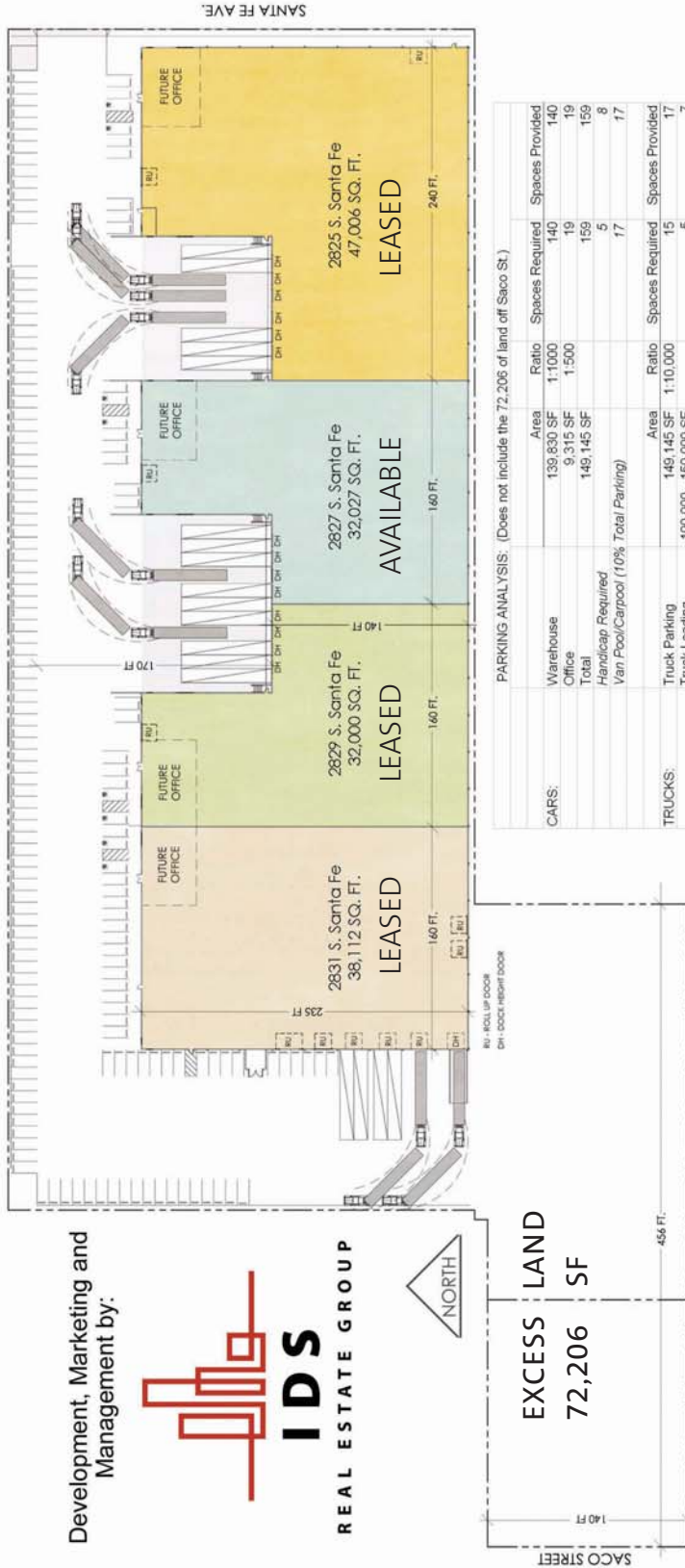
For Lease

32,027 SF CTU

2827 Santa Fe Avenue, Vernon, CA



**GRUBB & ELLIS**  
From Insight to Results



Developed, Managed and Marketed by:



REAL ESTATE GROUP  
CA License #00964696